

A NEW VARIETY OF
GLOSSINA SCHWETZI, NEWSTEAD & EVANS,
 FROM THE BELGIAN CONGO

BY
 W. H. POTTS

(Received for publication, 22 May, 1924)

Glossina schwetzi var. *disjuncta* var. nov.

Colour and pattern as in typical G. SCHWETZI, Newstead and Evans, but the distal processes of the harpes short and detached, and the median process more prominent.

MALE. Length, 11.6 mm. ; length of palpi, 3.2 mm. ; width of head, 3.25 mm. ; length of wing, 10.6 mm.

Genital Armature (fig. 1, A). Differing from that of typical *G. schwetzi* in the following characters :—

- (1) The *harpes* bears three pairs of processes (*h.1* ; *h.2* ; and *h.3*), the distal or third pair of which (*h.3*) is detached from the main body of the harpes, and, instead of being the longest, is barely as long as the second or middle pair (*h.2*).
- (2) The *median process* (*m.p.*) is larger, and projects well beyond the inferior claspers (*i.c.*), between which it is situated.

An illustration of the harpes of *Glossina schwetzi* (fig. 1, B) has been added in order to facilitate the comparison of the two armatures.

The above description is based on one specimen, a male, in a collection sent to this School for identification by Dr. Schouteden from the Museum of the Belgian Congo, Tervueren. The fly is one of two accompanied by the following data :—‘ Sur buffle tué à Buku Kaie, 26.6.21, Rodhain.’ The other fly proved to be a typical male *G. tabaniformis*.

The Type specimen is being sent back to the Museum of the Belgian Congo, Tervueren.

It is with great pleasure that I take this opportunity of thanking Professor Newstead, for his kind advice and assistance.

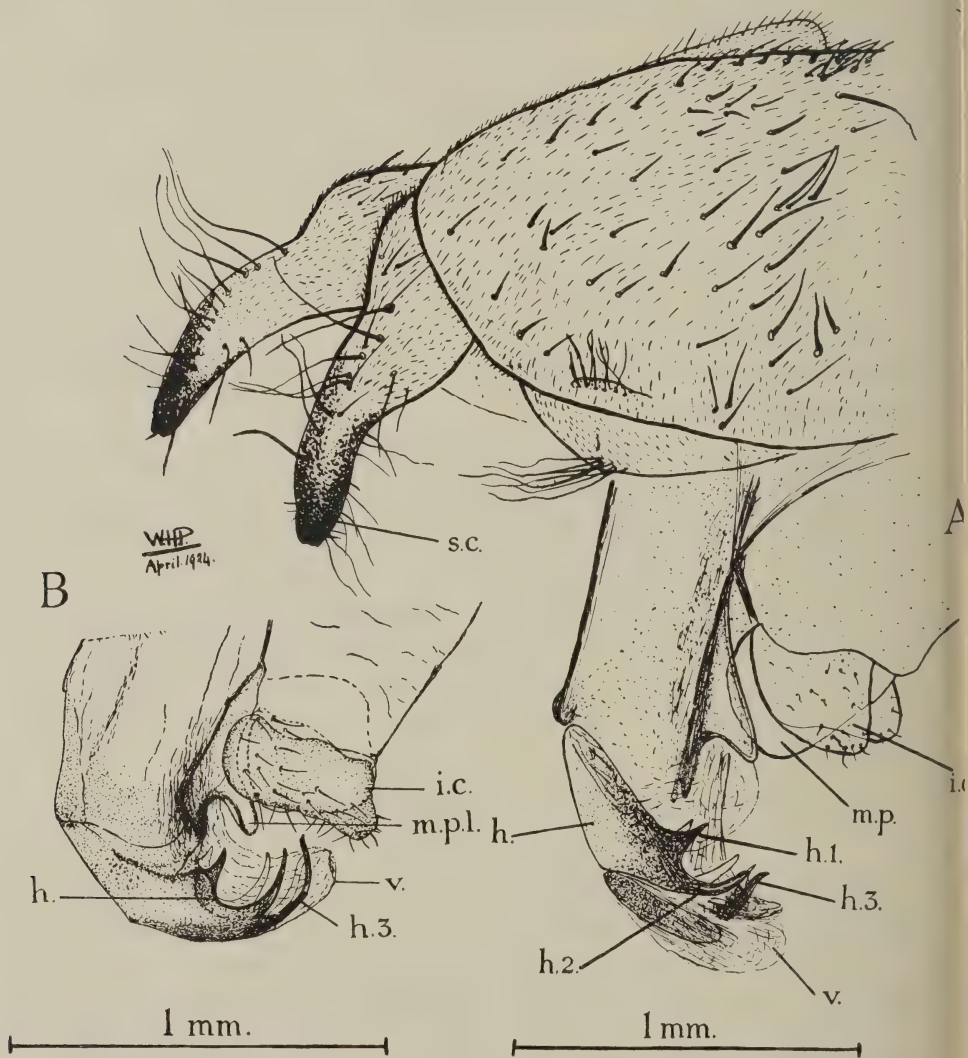


FIG. 1. A. Male Genital Armature of *Glossina schwezei* var. *disjuncta* var. nov. (\times about 60). B. Portion of male genital armature of *Glossina schwezei*, Newstead and Evans (\times about 50). *b.*—harpes; *b.1*, *b.2*, *b.3*—first, second, and third pairs of processes of the harpes; *i.c.*—inferior claspers; *m.p.*—median process; *m.p.l.*—inferior median process; *s.c.*—superior claspers; *v.*—vesica.